

25TH

ANNIVERSARY



November 6-7, 2024
Monroeville Convention Center
.....

**Sewer
Conference**
.....

.....
Conference program
including educational
session descriptions &
a full exhibitor guide
.....



NATIONAL GUNITE

NEXT GENERATION TRENCHLESS REHABILITATION SPECIALISTS

YOUR TURN-KEY
PIPE SOLUTION



SANITARY SEWER REHABILITATION

Typically consists of aging & failing brick or cast-in-place concrete structures from the late 19th century in need of a full circumference lining.



STORM SEWER REHABILITATION

Over the years, storm sewers have been constructed using many different materials, for example: CMP, brick, steel, stone, concrete, clay tile pipe, etc. NG has rehabilitated all types and shapes of storm sewers.



CULVERT REHABILITATION

Corrugated metal pipe was and is still widely used to replace failing culverts and only has a lifespan of ± 30 years, but National Gunite can apply shotcrete to extend the lifespan another 50+ years.



MANHOLE REHABILITATION

Brick and concrete manholes that have become heavily deteriorated over-time, or by trapped corrosive gases, can be rehabilitated using shotcrete or Strong-Seal products and our specialized manhole equipment.

PROUD PARTNER OF



GeoKrete® geopolymer, the Quadex Lining System® (QLS), represents the next generation of trenchless, structural renewal for raw, storm, and wastewater infrastructure. Its precision application ensures that every inch of your infrastructure is meticulously restored, providing structural integrity and longevity.

Moreover, GeoKrete® is designed with a strong commitment to sustainability, reducing the carbon impact of your project. With National Gunite's industry-leading expertise and our partnership with Vortex, you can trust that GeoKrete® offers an advanced and environmentally responsible solution for your infrastructure rehabilitation needs.



Learn more on
our website

Shane M. Snyder, Vice President

814-533-5780 570-447-9977 shane@nationalgunite.com

Welcome



How time flies! It feels like only a few months ago that we were all gathered at the Monroeville Convention Center (MCC), and here we are again. We are pleased to be hosting our 25th Anniversary 3 Rivers Wet Weather (3RWW) Sewer Conference at this excellent facility. You may have heard in the news earlier this year that the Convention Center was to be sold and would no longer host events, such as our annual two-day educational conference. Fortunately, many of our state and local officials worked hard to save this venue, and we thank them for their perseverance and commitment to our region. The MCC provides the optimal space for us to host this event with more than 100 exhibitors offering their products and services and an experienced slate of speakers sharing case studies, practical guidance, and their all-important “lessons learned” for municipalities to address this important environmental issue in south-

western Pennsylvania. While together we continue to make progress on consent order compliance, reducing overflows, and ultimately improving the quality of our waterways, we must forge ahead on the work we have begun. We hope this conference helps you to continue your critical progress in tackling the challenges of the wet weather issue. On behalf of the entire 3RWW staff, thanks for attending, and enjoy the conference.

W. David Montz
Executive Director
3 Rivers Wet Weather

Table of Contents

Conference Sponsors	3
Conference Materials	5
Conference Schedule	7
Session Guide - November 6	9
Session Guide - November 7	15
Exhibitor Guide	22

A&H EQUIPMENT

800.753.7566
ahequipment.com



Contact Your Territory
Sales Manager



**WE PROUDLY PARTNER
WITH ENVIRONMENTAL
EQUIPMENT & TOOL
LEADING MANUFACTURERS
WITHIN OUR INDUSTRY TO
ASSIST YOU TO GET THE JOB
DONE RIGHT.**

VACTOR
Authority of Personal Digital Connections

TRUVAC
by Vector Mfg. Inc.

KEG
The Difference Is Performance!

HYDRA-FLEX
FLUID INNOVATION



Conference Sponsors



Jacobs



AECOM

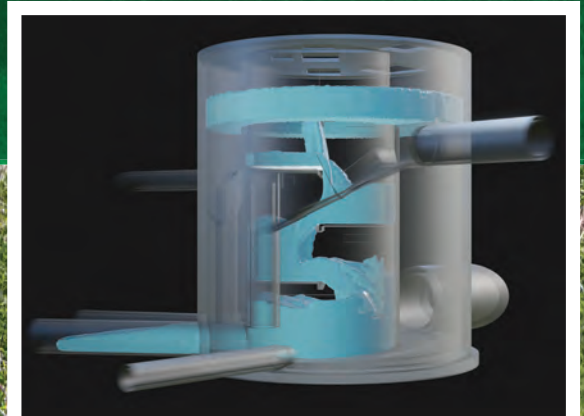




ENGINEERS + ARCHITECTS + PLANNERS

Redefining the Industry. Transforming the Environment.

Drinking Water, Wastewater, Wet Weather Management — GPD is committed to preserving our valuable resources.



1501 Reedsdale Street, Suite 501 | Pittsburgh, PA 15233 | 412.586.1380

    gpdgroup.com

Conference Materials

Continuing Education Tracking Form

Please use the **Continuing Education Tracking Form** provided in your conference envelope to submit the sessions you attend. Your form needs to be signed by a member of our conference staff after each morning and afternoon session to verify your attendance. Forms cannot be signed early.

Certified Wastewater Operators

This two-day conference is a DEP-approved wastewater training program. Pennsylvania-certified wastewater operators can earn up to four contact hours by attending the two-day event. If you are a certified wastewater operator, please include your 5- or 6-digit DEP Client ID number on your tracking form. Note: Class A, B, and C wastewater operators need to complete 15 contact hours for the first renewal (3 years) and 30 for every renewal thereafter. Class D and E operators need 8 hours and 15 hours subsequently.

Licensed Professional Engineers & Other Professionals

Engineers and other licensed professionals may use the continuing education tracking form to request a conference completion certificate with the total number of professional development hours (8.75 pdhs). Your professional licensing board will determine the credit earned from attending the conference.

Exhibit Hall Map

A two-sided **Exhibit Hall Map** is provided to help you navigate the exhibit hall. One side lists exhibitors by booth number and the flip side lists the exhibitors in alphabetical order. If you would like more details about a particular exhibitor, a company profile and contact information for each vendor is provided in the back of this conference booklet.

Evaluation Form

Please use the **Evaluation Form** to give us feedback on the educational sessions and the overall conference in general. We value your input as it helps to guide our future events. Every attendee who completes an evaluation form will be entered into a drawing for a \$50 gift card. Just drop your business card in the basket or complete our blank entry form with your name and email address. We will notify a winner shortly after the conference.

Exhibitor-Sponsored Prize Drawing

Please use the **Prize Drawing Entry Form*** to stop at each designated exhibit booth and get a stamp on your entry form to verify your visit. Once it is complete, drop the entry form into the prize drawing box for a chance to win a Gift Card Tree valued at more than \$1,000! One lucky winner will be chosen shortly after lunch on November 7. Winner does not need to be present to win.

“Stay to Win” Contest

Every registered attendee* will find **Two Colored Tickets** behind their name tag. Those who stay for the last educational session each day will have a chance to win a \$50 gift card. Tickets will be collected at the beginning of the session and a winner will be chosen immediately after the presentation. Winner must be present to win.

**Only registered attendees are eligible to win. Exhibitors/exhibit booth personnel, and conference staff are not eligible to win.*



Sauereisen

CELEBRATING 125 YEARS
of Ultimate Protection & Engineered Solutions.




SAUEREISEN


SEWERGARD®

ULTIMATE CORROSION PROTECTION

210


CORROSION CONQUERED.


 100% solids epoxy linings

 Resistant to H₂S and treatment chemicals.

 New construction and rehab applications

 Can be applied to SSD concrete

 ASTM D7234 bond strength to concrete failure

 Zero VOCs

Scan to learn more!



Conference Schedule

Wednesday, November 6, 2024

8:00-8:55 a.m.	Registration, Continental Breakfast & Exhibit Hall
8:55-9:00 a.m.	Welcome W. David Montz
9:00-9:45 a.m.	ALCOSAN's Clean Water Plan Update Jeff Argyros, Shawn McWilliams, Tim Prevost, & Julia Spicher
9:45-10:15 a.m.	The Creation and Implementation of an I&I Reduction Program Robert Herring
10:15-11:00 a.m.	Break & Exhibit Hall
11:00-11:30 a.m.	Sewer Lateral Compliance Program Melissa Komar & Michael Grandinetti
11:30 a.m.-12:00 p.m.	Water And Wastewater Cybersecurity Bob Kaminski
12:00-1:15 p.m.	Lunch & Exhibit Hall
1:15-2:00 p.m.	The Ohio River Tunnel Update Mike Lichte & Dan Sharek
2:00-2:30 p.m.	Safety Issues Facing Collection System Maintenance Workers Rusty Nezat
2:30-3:15 p.m.	Refreshment Break & Exhibit Hall
3:15-3:45 p.m.	Municipal Infrastructure Retrofits: The Unique Challenges Rob Woodman
3:45-4:15 p.m.	Benefits and Case Studies of Physical Hydraulic Modeling Justin Kerns & Troy Lyons

Thursday, November 7, 2024

8:00-9:00 a.m.	Registration, Continental Breakfast & Exhibit Hall
9:00-9:30 a.m.	Navigating Clean Waters: ALCOSAN's Modeling Journey Sam Shamsi, Brad Boddy & Afaf Musa
9:30-10:00 a.m.	Pump Station Improvements Design: To Rehabilitate or Redefine Kevin Wojciechowski & Juan Granja
10:00-10:30 a.m.	Innovative Collaboration: Churchill Pump Station Alternative Analysis Dennis Flynn
10:30-11:15 a.m.	Break & Exhibit Hall
11:15-11:45 a.m.	Metrics that Matter Part Deux: Evaluating Source Control Performance Tim Prevost & Andy Potts
11:45 a.m.-12:15 p.m.	Outfall Systems for Pre-treated Water: An Innovative Application in the La Plata River, Buenos Aires Pierluigi Nionelli
12:15-1:30 p.m.	Lunch & Exhibit Hall
1:30-2:00 p.m.	Community-Based GSI Partnerships with Recreational Benefits Melissa Carter & Kathryn Kelly
2:00-2:30 p.m.	Design Reconciliation for the CIPP Lining of a Century-Old Interceptor Marya Jetten
2:30-3:00 p.m.	Bypass Pumping and Specifications Jared Carothers & Seth Morris
3:00-3:30 p.m.	A Trenchless Solution for Stabilizing the Buckling Brookside Culvert Anthony Blanc



We are building the future of clean water for our region.

Each year, approximately 9 billion gallons of wastewater overflow into our region's waterways. As one of the four pillars of ALCOSAN's Clean Water Plan, our Plant Expansion program will provide additional treatment capacity and help reduce the number of overflows caused by excess stormwater entering the system.

To learn more about ALCOSAN and our Clean Water Plan, please visit
www.alcosan.org



Session Guide

Wednesday,
November 6

8:00-8:55 a.m. Registration, Continental Breakfast & Exhibit Hall

8:55-9:00 a.m. **Welcome**
W. David Montz ■ 3 Rivers Wet Weather

9:00-9:45 a.m.
ALCOSAN's Clean Water Plan Update
Jeff Argyros, Shawn McWilliams, Tim Prevost, & Julia Spicher ■ ALCOSAN

This presentation will focus on the four primary components of the Clean Water Plan (CWP) including wastewater treatment plant expansion, source controls and Green Revitalization of Our Waterways (GROW), regionalization, and increased conveyance capacity. Attendees will hear an update on the status of the Clean Water Plan, including how the various components impact their municipality, and how they can participate in CWP implementation.

Jeff Argyros is ALCOSAN's Manager of Capital Projects for the treatment plant where he oversees the ongoing Wet Weather Plant Expansion, which will double the treatment plant's capacity in the next seven years. He is a registered professional engineer in Pennsylvania.

Contact: 412.734.6281 | jeff.argyros@alcosan.org

Shawn McWilliams is a Project Engineer at ALCOSAN focused on the design and construction of the Clean Water Plan's regional tunnel system. Shawn has more than 17 years' experience at ALCOSAN working on all facets of sanitary sewer system design and construction.

Contact: 412.732.8053 | shawn.mcwilliams@alcosan.org

Tim Prevost is ALCOSAN's Manager of Wet Weather Programs and oversees ALCOSAN's award-winning GROW program. Tim has more than 20 years' experience working at ALCOSAN, is a registered professional engineer, and a past recipient of the ASCE Engineer of the Year award.

Contact: 412.734.8731 | timothy.prevost@alcosan.org

Julia Spicher is ALCOSAN's Manager of Regionalization. She actively works with customer municipalities to transfer ownership and maintenance for 265 miles of trunk sewer and associated facilities from the municipalities to ALCOSAN. Julia is a LEED AP and certified wastewater collection system operator.

Contact: 412.734.8749 | julia.spicher@alcosan.org

9:45-10:15 a.m.
The Creation and Implementation of an I&I Reduction Program

Robert Herring ■ The Washington-East Washington Joint Water Authority

In 2022, the Washington-East Washington Joint Authority implemented a multifaceted approach to responsibly and efficiently address I&I issues in its system, including enhancement of its CCTV fleet, proactive inspections, remote monitoring of SSOs, and obtaining better data on wet weather performance. Participants will learn how to dedicate staff resources to inflow and infiltration initiatives, leverage existing and new technologies, and track project progress.

Rob Herring has served as Executive Director of the Washington-East Washington Joint Authority (WEWJA) since December 2023. Prior to WEWJA, Rob worked at The Pittsburgh Water and Sewer Authority within the Engineering Department's Sewer Group, and Nichols and Slagle Engineering performing municipal engineering work around western Pennsylvania. He graduated from Penn State with a B.S. in civil engineering, and a master's degree in civil engineering from Pitt.

Contact: 724.225.1338 | rherring@wewja.org

10:15-11:00 a.m. Break & Exhibit Hall

11:00-11:30 a.m.
Sewer Lateral Compliance Program

Melissa Komar & Michael Grandinetti ■
Johnstown Regional Sewage

In 2017, Johnstown Regional Sewage began its Sewer Lateral Compliance Program to assist property owners in obtaining cost-effective mandated remediation of underground privately owned sewer laterals. The initiative was created to provide financial assistance to homeowners who may not have the immediate financial resources available for making this capital improvement to their property. Over the last seven years, the program has assisted over 600 homeowners and provided over \$2,000,000 in funding. Attendees will learn how this effort assisted ratepayers with financial barriers, provided general sewer revenue fund dollars, and leveraged additional funding by coordinating with multiple local agencies for grant funding.

Session Guide

Wednesday,
November 6

Melissa Komar is the Executive Director of Johnstown Regional Sewage and Johnstown Redevelopment Authority (JRA). She is also the Pennsylvania Municipal Authorities Association's (PMAA) immediate past president. Melissa was Region 6 director from 2018 – 2021 for Bedford, Blair, Cambria, Clearfield, Fulton, Huntingdon, Indiana, Juniata and Somerset counties. Melissa also chairs the Cambria County Planning Commission.

Contact: 814.535.6564 | mkomar@jrpa.org

Mike Grandinetti is the Maintenance & Operations Manager for Johnstown Regional Sewage, oversees the Dornick Point Wastewater Treatment Plant, and serves as the sewer lateral program liaison. Mike also oversees all Johnstown Redevelopment Authority interceptor projects, working directly with the JRA engineer contractors regarding new construction, and continued maintenance program.

Contact: 814.535.6564 | mgrandinetti@jrpa.org

11:30 a.m.-12:00 p.m.

Water and Wastewater Cybersecurity

Bob Kaminski ■ Cybersecurity and Infrastructure Security Agency

Every organization connected to the Internet is at risk from cyber threats that can disrupt essential services and potentially result in impacts to security, national economic security, national public health or safety. The U.S. Department of Homeland Security, Cybersecurity and Infrastructure Security Agency (CISA) is the operational lead for federal cybersecurity and the national coordinator for critical infrastructure security and resilience. The CISA Cybersecurity Advisor will share insights on the current state of cybersecurity, current and emerging threats, and discuss risk mitigation activities to help protect users and organizations.

*Bob Kaminski serves as a Cybersecurity Advisor (CSA) for the Cybersecurity and Infrastructure Security Agency (CISA). In support of CISA's mission of reducing risks to U.S. critical infrastructure, Bob works with public and private sector critical infrastructure owners and operators to strengthen their cybersecurity posture. Bob provides cyber preparedness assessments and protective resources and support in times of cyber threat, disruption, or attack. **Contact:** 412.239.4733 | robert.kaminski@hq.dhs.gov*

12:00-1:15 p.m.

Lunch & Exhibit Hall

1:15-2:00 p.m.

The Ohio River Tunnel Update

Mike Lichte & Dan Sharek ■ ALCOSAN

In 2021, ALCOSAN began the final design for the Ohio River Tunnel (ORT), the first of three tunnel projects. Through 2024 the ORT final design has advanced to near completion and the project construction is planned to bid in 2025. This presentation will provide illustration of various tunnel system components, discuss their planned operation and the primary factors influencing final design, and present considerations to be made in preparing for construction.

An ALCOSAN employee since 2008, Mike Lichte has served as the Authority's Director of Regional Conveyance since 2021. Previously, he was Manager of Planning focused on implementing ALCOSAN's Clean Water Plan. He received his B.S. in aquatic environments from Allegheny College and an M.S. in civil engineering from the University of Pittsburgh. He has 25+ years' experience and is a licensed engineer in Pennsylvania. Previously, he served as Director of Engineering and Construction for the Pittsburgh Water and Sewer Authority.

Contact: 412.732.8004 | michael.lichte@alcosan.org

Dan Sharek, P.E., is ALCOSAN's Manager of Capital Projects, Conveyance. Dan's 25+ years' experience and interests include all aspects of wet pipelines/tunnels, wastewater and stormwater/CSO hydraulics and network modeling, including facility design, operation and control, construction, and commissioning.

Contact: 412.951.7120 | daniel.sharek@alcosan.org

2:00-2:30 p.m.

Safety Issues Facing Collection System Maintenance Workers

Rusty Nezat ■ Nezat Training and Consulting

Every year collection system workers are injured and sometimes killed due to their lack of knowledge and understanding in the use of certain tools necessary to perform their work. The purpose of this presentation is to educate attendees on the inherent dangers involved in the use of specific tools, including pneumatic plugs, high-pressure nozzles, and high-pressure hoses. Attendees will learn about proper use and precautions that must be exercised when using these tools and the possible injuries that could occur.

Session Guide

Wednesday,
November 6

Rusty Nezat, Director and Founder of Nezat Training and Consulting in Houston, has been involved in the sewer cleaning, maintenance, inspection and rehabilitation industry for 30+ years and has been directly involved in cleaning thousands of feet of pipe through the U.S. Through his unique curricular approaches, sewer groups have enhanced safety awareness, increased their overall daily production rates, and decreased equipment downtime.

Contact: 281.788.5221 | rusty@nezat.com

2:30-3:15 p.m. Refreshment Break & Exhibit Hall

3:15-3:45 p.m. Municipal Infrastructure Retrofits: The Unique Challenges

Rob Woodman ■ Ferguson Waterworks

As towns and cities across the country seek to implement green stormwater infrastructure (GSI) retrofit projects, there are a series of unique challenges that differ from managing wet weather on private site development projects. Understanding and addressing these challenges will improve the outcomes, impact, and cost-effectiveness of these projects. This presentation seeks to identify many of the key challenges associated with GSI retrofit projects, provide simple guidance to designers and program managers on how to plan for and account for them from planning through to post installation O&M, and include commentary from a number of city scale GSI programs.

Robert Woodman is Director of Engineering and GSI for Ferguson Waterworks where he leads a team supporting engineers, landscape architects, and designers on site development and GI systems overcoming design and permitting challenges with innovative solutions. He graduated with a degree in civil engineering in Australia and is a registered professional engineer in Maine and Pennsylvania.

Contact: 207.272.4431 | rob.woodman@ferguson.com

3:45-4:15 p.m.

Benefits and Case Studies of Physical Hydraulic Modeling

Justin Kerns ■ ms consultants

Troy Lyons ■ University of Iowa

Physical hydraulic modeling is a hands-on, practical approach to developing effective engineering designs and conducting applied hydraulic research. It often involves scaled representations of hydraulic flow situations. In addition to designing hydraulic systems, today's precise physical models make it possible to calibrate sophisticated computational fluid dynamics (CFD) and other numerical models, and validate and update long-standing engineering principles and design methodologies. This presentation will discuss the benefits and applications of this powerful, often underutilized tool and demonstrate through case studies how physical modeling can improve the hydraulic design process.

Justin Kerns serves as Technical Services Manager and Project Manager for ms consultants in Pittsburgh. For the past 11 years, he has specialized in water resources-related projects with an emphasis on stormwater research, erosion and sediment control, green infrastructure, and hydrologic & hydraulic analyses. He is a licensed professional engineer in Ohio and Pennsylvania and a certified professional in erosion and sediment control.

Contact: 412.264.8701 | jkerns@msconsultants.com

As Lead Investigator of hydraulic engineering research projects at University of Iowa's Hydroscience & Engineering, Troy Lyons' expertise includes hydraulic evaluation and design, river hydraulics, physical laboratory and numerical modeling, sediment transport, two-phase flows, and fish passage. Many of his projects have focused on the design, testing, and improvement of dams and spillways and related structures.

Contact: 319.335.5319 | troy-lyons@uiowa.edu

Registered attendees who stay for the last session of the day earn the chance to win a \$50 gift card. Must be present to win.

Our innovation begins with your **challenges.**



Akron Ohio Canal Interceptor Tunnel

UNDERGROUND HEAVY CIVIL ENGINEERING FOR
Wastewater | Water | Transportation | Energy

DELVE
underground



Morris Knowles & Associates, Inc.

Consulting Engineers and Land Surveyors

Municipal Engineering
Water, Wastewater & Environmental Engineering
Land Development Engineering & Permitting
Stormwater Management Design
Environmental Engineering - Wetlands
Energy Sector, O&G, Solar, Pipeline Permitting
Construction Administration/ RPR
Consent Order
Pump Station Designs

Corrective Action Plans
Act 537 Plans, Rate Studies, Top Fee Studies
Hydraulic System Modeling/ Infiltration Studies
NPDES Permitting, Chapter 94 Reports
Funding & Grant Assistance
Surveying- GIS Systems, ALTA
Surveying- Construction Staking
Surveying- Topography, Boundary
Surveying- Unmanned Aerial Systems

Full Service Civil Engineering and Surveying Firm

Delivering unparalleled engineering solutions with a commitment to excellence,
ensuring high quality plans and specifications.



GHD proudly supports **3 Rivers** Wet Weather

↳ **GHD's Pittsburgh office:**

4068 Mount Royal Blvd, Suite 201
Allison Park, PA 15101

30+ professionals including engineers, environmental scientists, field technicians and construction staff.

11,000+ professionals globally

Contact:

Water – Rulison Evans Rulison.evans@ghd.com or
Mallory Griffin Mallory.griffin@ghd.com

Environment – Daniel Cusick Daniel.cusick@ghd.com

→ **The Power of Commitment**

Customizable solutions with minimal service interruptions



Manhole Coatings • Wet Wells • Potable Water Storage
Culvert Lining • Secondary Containment



419-636-2684
525 Winzeler Drive, Unit 1
Bryan, OH 43506
www.artcoatingtech.com



WATER RESILIENCE

for a sustainable tomorrow

With mounting pressure on resources and infrastructure driven by expanding urban economies and climate change, the need for sustainable water management has never been clearer. At WSP, we're helping clients and communities navigate complex challenges with Future Ready® solutions to manage and secure water resources for generations to come.

To learn more about WSP, stop by booth #88.

wsp.com



www.cosmostechnologiesinc.com



HONOR ENGINEER Co.

GEOSPATIAL & CONSTRUCTION | LANDSCAPE ARCHITECTURE & CIVIL
WATER & ENVIRONMENTAL



SCAN HERE

Session Guide

Thursday,
November 7

8:00-9:00 a.m. Registration, Continental Breakfast & Exhibit Hall

9:00-9:30 a.m.
Navigating Clean Waters: ALCOSAN's Modeling Journey

Sam Shamsi ■ ALCOSAN
Brad Boddy ■ Wade Trim
Afaf Musa ■ CDM Smith

To implement its Clean Water Plan, ALCOSAN began modeling efforts to address sewer overflows. This presentation outlines the development and use of a hydrologic and hydraulic model as a crucial component of the plan, including the history, features, calibration, and various applications of the Storm Water Management Model (SWMM). Attendees will also learn how 3RWW has shared the model with municipalities for compliance purposes, emphasizing the efficiency of the cloud-based model sharing task. Finally, the session will cover the annual validation and updates of the model. Overall, the presentation will effectively convey the significance of the model in ALCOSAN's CWP and the collaborative efforts involved in its implementation and maintenance.

Dr. Uzair (Sam) Shamsi is a Hydraulic Engineer with ALCOSAN. His 36-year career includes expertise in wet weather planning, green stormwater infrastructure, hydrologic and hydraulic and water quality modeling, and Geographical Information System (GIS). His outstanding achievements include ASCE-Pittsburgh Civil Engineer of the Year, the ASCE Region-2 Lifetime Achievement Award, authoring three textbooks and serving as adjunct professor at various universities.

Contact: 412.734.6242 | sam.shamsi@alcosan.org

Brad Boddy, P.E., is a Senior Project Manager and Vice President with Wade Trim and currently serves as the Design Coordination Lead on the Tunnel Program Management team. Brad has more than 28 years' experience in the planning, design, and construction of CSO and SSO control projects. He received a B.S. in civil engineering and an M.S. in environmental engineering from Michigan State University. He has worked on wet weather issues within Allegheny County for the last 20 years.

Contact: 412.480.9156 | brad.boddy@wadetrim.com

Afaf Musa is a Water Resources Engineer for CDM Smith with 17 years' experience leading wastewater master plans, sanitary sewer studies and sewer rehabilitation design projects for trunk and subtrunk sewers. Afaf has experience in analyzing wastewater, stormwater, and combined systems, with a focus on performing flow monitoring and rainfall dependent infiltration and inflow (RDII) analysis.

Contact: 614.847.6858 | musaab@cdmsmith.com

9:30-10:00 a.m.
Pump Station Improvements Design: To Rehabilitate or Redefine

Kevin Wojciechowski & Juan Granja ■ GPD Group

The Northeast Ohio Regional Sewer District (NEORS) identified two existing pump stations that they own and operate that required repairs and rehabilitation. The \$2 million project included updates to improve the safety, access, and operational efficiency of the stations. This presentation will highlight the complexities and design considerations relative to the improvements made by utilizing the existing equipment and infrastructure where practical, while also considering the cost-benefit impacts. Attendees will learn the importance of initial assessment, leveraging how an alternative's benefits analysis can offset construction and/or maintenance costs, and the value of harnessing unique perspectives to present alternative solutions, rather than simply replacing faulty equipment.

Kevin Wojciechowski, a Project Manager with GPD Group, graduated from The Ohio State University with a B.S. in civil engineering and a minor in surveying and mapping. In his 10 years' experience, he has focused on collections and conveyance with additional experience in wastewater treatment. Recent work has ranged from sewer capacity studies, sewer separation, micro-tunneled sewer design, drop-structure design, pump station design, and booster pump station design.

Contact: 216.927.8662 | kwojciechowski@gpdgroup.com

Juan Granja has 17 years of civil engineering experience for various projects involving water supply and pump stations for public and private clients. The GPD Group Project Manager has obtained considerable experience through projects that involved the development and execution of feasibility evaluations, subsurface exploration programs, preliminary design, final design, construction cost estimating, production of contract documents, and engineering field services.

Contact: 614.565.9744 | jgranja@gpdgroup.com

Session Guide

Thursday,
November 7

10:00-10:30 a.m.

Innovative Collaboration: Churchill Pump Station Alternative Analysis

Dennis Flynn ■ Gateway Engineers

Operating a sewage pump station can be a burden to small municipalities like Churchill Borough. In an effort to identify alternative solutions, the Borough worked with neighboring municipalities and ALCOSAN within the regulatory requirements of their consent order to evaluate solutions to their antiquated pump station. The process allowed for a solution that benefited Churchill, their downstream neighbors, and multiple sewersheds by taking flow from a system that was over capacity and directing it to a system with available capacity. Grant funding helped to implement the project and meet regulatory compliance requirements. This presentation will outline the process that was taken to accomplish these feats.

Dennis J. Flynn, P.E. is a Project Manager with the Gateway Engineers, a full-service civil engineering consulting firm where he has worked since 2007. He represents multiple municipalities and has been involved with the many phases of the regional sanitary sewer consent order. He has worked on a variety of projects including water/wastewater, pavement management, park and recreation development, and oil and gas, among others.

Contact: 412.409.2380 | dflynn@gatewayengineers.com

10:30-11:15 a.m. Break & Exhibit Hall

11:15-11:45 a.m.

Metrics that Matter Part Deux: Evaluating Source Control Performance

Tim Prevost ■ ALCOSAN

Andy Potts ■ Jacobs

Municipal consent orders necessitated the design and construction of source control projects throughout the ALCOSAN service area. But how do you know if the source control project is doing its job? During this session, ALCOSAN's GROW team will share methods for assessing the effectiveness of source control projects and sharing the results of nearly 100 completed GROW projects.

Tim Prevost, ALCOSAN's Manager of Wet Weather Programs, leads the highly successful GROW program. With over 25 years' experience at ALCOSAN and as a registered professional engineer, Tim has been honored with both the ASCE Government Engineer of the Year and ASCE Engineer of the Year awards.

Contact: 412.734.8731 | timothy.prevost@alcosan.org

A Global Principal with Jacobs, Andy Potts has over 24 years' experience in green stormwater infrastructure (GSI), stormwater and watershed management, water resources, and sustainable site design applications. He focuses on GSI system design and implementation, modeling and performance evaluations of source control projects, and innovative stormwater management. He has an MSCE from the University of Virginia and is a professional engineer, a LEED-Accredited Professional, and an EWRI Fellow.

Contact: 215.845.6916 | andrew.potts@jacobs.com

11:45 a.m.-12:15 p.m.

Outfall Systems for Pre-treated Water: An Innovative Application in the La Plata River, Buenos Aires

Pierluigi Nionelli ■ Pini Group USA

Modern outfall systems have application in both sanitation and water treatment. The Riachuelo System in Buenos Aires is a mega project that was designed to aid in environmental efforts to decontaminate the area of the Matanza-Riachuelo basin, one of the most polluted areas in the world. Construction of this outfall has been a challenging experience, and attendees will hear how project team members implemented a strict risk management approach and have worked to apply modern and innovative technologies, both at the design and construction level, including a new "riser concept" technique.

Pierluigi Nionelli serves as Head of Business Line Hydropower for Pini Group USA. With 18 years' experience, his area of expertise/research interest is large infrastructures for transportation, water management, and hydropower. He graduated from Polytechnic of Turin in Italy with a MSc in tunneling and tunnel boring machines. He also holds a BSc in civil engineering.

Contact: 412.506.0622 | pierluigi.nionelli@pini.group

12:15-1:30 p.m. Lunch & Exhibit Hall

Session Guide

Thursday,
November 7

1:30-2:00 p.m.

Community Based GSI Partnerships with Recreational Benefits

Melissa Carter ■ Stantec

Kathryn Kelly ■ Narragansett Bay Commission

The Narragansett Bay Commission (NBC), which provides wastewater collection and treatment services to more than 350,000 customers in Rhode Island, implemented a Phase III CSO program that favored incorporating green storm-water infrastructure (GSI), but faced challenges due to the densely developed urban service area of NBC. Participants will learn through several case study examples how NBC partnered with the City of Central Falls to advance GSI projects focusing on locations where a large volume of runoff could be removed from the collection system while maximizing other benefits to the community as well. Lessons learned will also be shared.

Melissa Carter is Program Manager for Stantec, where she oversees large-scale water and wastewater infrastructure projects. She received both her B.S. in civil engineering and M.S. in environmental engineering from the Georgia Institute of Technology. Melissa practiced engineering in the southeastern United States for more than a decade before relocating to the northeast.

Contact: 401.214.1736 | melissa.carter@stantec.com

Kathryn Kelly is the Assistant Director of Engineering & Construction for the Narragansett Bay Commission where she manages a variety of capital projects for wastewater collection and treatment facilities. Kathryn is a graduate of the University of Rhode Island with a B.S. in chemical and ocean engineering and an M.S. in civil and environmental engineering.

Contact: 401.461.8848 | kkelly@narrabay.com

2:00-2:30 p.m.

Design Reconciliation for the CIPP Lining of a Century-Old Interceptor

Marya Jetten ■ AECOM

The Front Street Interceptor Rehabilitation Project involved installation of a reinforced CIPP liner in an interceptor originally constructed in 1913 along the east banks of the Susquehanna River in Harrisburg. The area is currently in a park setting and the interceptor required rehabilitation to eliminate infiltration as well as to provide long-term structural integrity for a very critical pipe in the network. Pre-design began in 2020 with the

full rehabilitation project completed in 2023. Installation phase assessments were carried out to ascertain compliance of the installed CIPP with the design objectives for the project, while design reconciliation required the use of an innovative balance of indirect and direct measurement techniques. Attendees will learn about the steps and challenges of this project along with post-construction lessons learned.

Marya Jetten is AECOM's Conveyance Market Sector Lead for the Americas with experience in leading and managing large-diameter conveyance infrastructure projects using trenchless methods and rehabilitation. Marya was recognized for her contributions to the trenchless industry with NASTT's Ralston Young Trenchless Achievement Award in 2023.

Contact: 416.427.5453 | marya.jetten@aecom.com

2:30-3:00 p.m.

Bypass Pumping and Specifications

Jared Carothers & Seth Morris ■

Xylem Dewatering Solutions

Designing a temporary pumping system must be approached with the same level of engineering fundamentals that would be applied to a permanent solution. All bypass pumping systems require an understanding of system components, pump size selection, quantity, product pumped, economics, and environmental regulations. Engineers develop tailored system designs with performance curves to determine the ideal solution for pumping projects. Attendees will learn about bypass pumping system components, basic design recommendations in bypass pump specifications, and an overview of existing designs as well as new innovative designs that provide superior performance.

Jared Carothers has worked as a Regional Applications Engineer with Xylem since 2021 developing solutions in the fields of wastewater, construction, clean water, and various other applications related to pumping. He has prior experience in the electrical industry as an engineer working with emergency power technologies. Seth earned his B.S. in mechanical engineering from Robert Morris University.

Contact: 724.266.6936 | jared.carothers@xylem.com

Session Guide

Thursday,
November 7

A Regional Sales Engineer and Manager for Xylem Dewatering Solutions since 2012, Seth Morris is a licensed engineer in twelve states and a former USAF Capt. Civil Engineer. Over his 23 years of civil, geotechnical and infrastructure work, Seth has experience related to pump systems including temporary and permanent pumping applications, emergency preparedness, flood control, and mitigation, as well as infrastructure upgrades.

Contact: 856.467.3636 | seth.morris@xylem.com

3:00-3:30 p.m.

A Trenchless Solution for Stabilizing the Buckling Brookside Culvert

Anthony Blanc ■ Osborn Engineering

The Brookside Culvert is a combined sewer overflow (CSO) and stormwater culvert located within more than 100 backyard properties of a residential area of Cleveland, Ohio in the Northeast Ohio Regional Sewer District (NEORS). In 2018, NEORS, through a site inspection, found not only holes, but severe buckling in the culvert making it at risk of collapse. This presentation will discuss the design and constructability challenges faced to repair the failing culvert from pre-design through construction, including the lessons learned. Attendees will also learn about the background of the Brookside Culvert, the risks associated with its potential failure, and the initial field investigations that were performed and their findings.

Tony Blanc, the Director of Water Resources for Osborn Engineering, has 40 years working in water resources that includes process and infrastructure for both drinking water and wastewater. He earned a bachelor's degree and master's degree in civil engineering from Cleveland State University, as well as a master's in public works.

Contact: 216.861.2020, ext. 13234 | tblanc@osborn-eng.com

Registered attendees who stay for the last session of the day earn the chance to win a \$50 gift card. Must be present to win.



D.E. Gemmill Inc.
Signs & Safety Division
3096 E. Prospect Road
York, PA 17402
717-747-1391
www.degemmill.com



**-SAFETY APPAREL -TRAFFIC CONTROL PRODUCTS -EMS SUPPLIES
-SIGN MANUFACTURING & SIGN SALES -TRAFFIC CONTROL RENTALS**

**Dräger heavy duty
sensors built for
tough environments**



**Dräger Polytron® 8100
Fixed Gas
Detection System**

W.B. WELLS CO., INC.



Exclusive Dräger Representative
www.draeger.com

Protect Your Concrete in the Toughest Wastewater Environments with Xypex Bio-San

Xypex Bio-San Admix and Xypex Megamix II with Bio-San provide protection against Microbial Induced Corrosion (MIC). Combining potent antimicrobial properties with the Xypex Crystalline Waterproofing Technology, Bio-San extends the life of your concrete while reducing maintenance and repair costs.

- Engineered for Harsh Sewage Conditions
- Kills the Acid-Generating Microbes
- 9x Less Corrosion
- Waterproofing and Self-Healing
- Extends Service Life
- Reduces Maintenance



XYPEX BIO-SAN
Ideal for new construction projects



XYPEX MEGAMIX II WITH BIO-SAN
The perfect solution for rehabilitation



Discover the ultimate protection to your sewage and wastewater infrastructure. Scan the QR code to learn more about the Xypex Bio-San Technology.



AECOM

Giving back to our community

AECOM is proud to be a Sponsor of the 25th Annual 3 Rivers Wet Weather Sewer Conference

aecom.com

SUPERIOR • VERSATILE • RELIABLE



GapVax®

GapVax custom builds to meet YOUR needs. Industrial vacuum equipment built FOR THE OPERATOR, BY THE OPERATOR. There's no time for down time, that's why we build the most reliable equipment, ready for anything AND easy to operate and maintain. Air movers, hydro excavators, combination jetvac's, recycle jetvac's, trailer jettors, skid mounted vacuum units, parts and accessories - we've got what you need! Give us a call today to request a demo or speak with a sales manager!

Stay up to date with us on social to see where we're going next!

281-884-8658
LA PORTE, TX

GAPVAX.COM
f @ y t d

888-442-7829
JOHNSTOWN, PA



MTECH

PREMIUM PRODUCTS | SUPERIOR SERVICE

SEWER INSPECTION EQUIPMENT



JETTERS & VACUUMS



TOOLS & ACCESSORIES



ELEVATE YOUR EXPECTATIONS

800.362.0240 | sales@mtechcompany.com | mtechcompany.com

Exhibitor Guide

A&H Equipment Co.

Booths E & F

Is headquartered in Zelienople, PA with two other locations in Harrisburg and Somerset. Combines quality products and parts with expert support services to meet the needs of municipal contractors and airport clients throughout PA and WV. The A&H team has been providing industry-leading environmental and truck equipment solutions since 1963.

Contact: Melissa Weber ■ 412.638.0919
melissaw@ahequipment.com ■
www.ahequipment.com

ACO

Booth 43

A global company specializing in stormwater management products since 1954. "Collect, Clean, Hold, Release" is carried through with extensive product types that include: precast trench drains, separator devices, detention holding devices, and discharge devices. Since 1976, ACO has been the industry leader in precast trench drains in the USA.

Contact: Jim McConnell ■ 440.477.9316
jim.mcconnell@aco.com ■ www.acoswm.com

ADS Environmental Services*

Booth 40

Offers comprehensive, innovative flow information from real-time flow data to temporary flow monitoring reports. Whether it is collection system flows, sewer levels, the effects of rainfall, wastewater problems including SSOs, optimized sewer cleaning, CSOs, inflow & infiltration, hydraulic modeling, accurate sewer billing, or sewer capacity management, ADS delivers the right information at an affordable cost. Flow and level monitors will be on display.

Contact: Robert Grob ■ 859.512.8204
rgrob@idexcorp.com ■ www.adsenv.com

Advance Instruments

Booth 4

Offers instrumentation, sales, service, and calibrations.

Contact: Todd Abbott ■ 863.397.9104
talonz935@gmail.com ■
www.advanceinstruments.com

Advanced Drainage Systems

Booth C

An industry leader of high-performing, durable pipe built to provide innovative stormwater management solutions. Advancing the world's water infrastructure with chambers, basins, and more. Not only can you count on us for premium performing products, but we help support you before, during, and after your project.

Contact: Zack McQueen ■ 412.992.0041
zachary.mcqueen@ads-pipe.com ■ www.adspipe.com

Advanced Pipe Technologies

Booth 93

A division of Merante Companies, Advanced Pipe Technologies is a leader in commercial, public, city, and state projects since 1987. Advanced Pipe is a Mid-Atlantic leader in UV CIPP Lining and works to maintain underground infrastructure through full-service pipe solutions. Built on a reputation of safety and dedication to quality work, Advanced Pipe Technologies is here to lend our expertise as partners in public improvements.

Contact: Derek Offutt ■ 724.923.8922
doffutt@advancedpipetechnologies.com ■
www.advancedpipetechnologies.com

Advanced Rehabilitation Technology

Booth 20

Provides municipal and industrial customers with Severe Service Lining Systems. Using OBIC Products, ART provides customers with lining systems in manholes, wet wells, culverts, treatment plants, and industrial facilities that prevent infiltration, exfiltration, and deterioration protection from corrosive environments.

Contact: Rusty Hesselschwardt ■ 567.239.6146
rusty@artcoatingtech.com ■ www.artcoatingtech.com

**Participating exhibitor in the gift card prize drawing*

Exhibitor Guide

AECOM Technical Services East Region

Booth 24

An infrastructure consulting firm whose projects span transportation, buildings, water, energy, and the environment. Through our Think and Act Globally strategy, we are focused on extending our industry-leading, global expertise to each of our projects around the world, transforming the way we deliver work through technology and digital platforms.

Contact: Pat O'Brien ■ 216.408.8749
patrick.obrien@aecom.com ■
aecom.com/markets/water/

ALCOSAN*

Booth 3

The clean water agency for most of Allegheny County, providing conveyance and wastewater treatment to 83 municipalities including Pittsburgh. Works closely with its customer municipalities, offering grants and technical assistance for flow reduction projects, regionalization of multi-municipal trunk sewers, and material brochures and presentations for ratepayers.

Contact: Jeanne Clark ■ 412.734.6222
jeanne.clark@alcosan.org ■ www.alcosan.org

Allegheny County Conservation District

Booth 36

The Allegheny County Conservation District is an urban conservation district that engages and leads through partnerships, innovation, and implementation to conserve, promote, and improve Allegheny County's natural resources.

Contact: Matt Gordon ■ 412.291.8003
mgordon@acdpa.org ■ www.acdpa.org

Arcadis

Booth 12

The world's leading company delivering sustainable design, engineering, digital and consultancy solutions for natural and built assets. We are more than 36,000 architects, data analysts, designers, engineers, project planners, and water management and sustainability experts, all driven by a passion for improving quality of life.

Contact: Ron Ciucci ■ 724.934.9544
ronald.ciucci@arcadis.com ■ www.arcadis.com

Atlas Minerals & Chemicals

Booth 96

Established in 1892 and has been developing and manufacturing industry premier corrosion-resistant construction materials and corrosion-resistant lining systems for leading companies in all aspects of manufacturing. Atlas Anchor-lok, is a thermoplastic lining, which mechanically locks into concrete structures to provide unmatched corrosion protection.

Contact: Craig Oaks ■ 484.769.1986
coaks@atlasmin.com ■ www.atlasmin.com

AUMA Actuators Inc.

Booth 65

For 48 years, AUMA-USA has manufactured American-made electric actuators in western PA. As a top-tier supplier to water, power, oil & gas, and industrial sectors, we efficiently manage quarter-turn, multi-turn valves, and dampers. Integrated motor controls and versatile interfaces suit various plant control needs, ensuring reliable operation.

Contact: Scott Fanning ■ 724.743.2862
scott.fanning@auma-usa.com ■ www.auma.com

CivicMapper

Booth 94

CivicMapper is a geospatial solutions provider that uses modern mapping technology for decision makers on the front lines of climate, infrastructure, and social equity. We develop geospatial data, build web-based analysis tools, and create spatially enabled software for many types of projects in the natural and built environments.

Contact: Emily Mercurio ■ 412.545.3627
emily.mercurio@civicmapper.com ■
www.civicmapper.com

Civil & Environmental Consultants Inc.*

Booth 50

A leader in green infrastructure design and performance assessment. Qualified and experienced professionals design innovative stormwater solutions, including effective maintenance and monitoring programs. Combines the art and sciences of stormwater and landscape management and aspires to drive thoughtfully located, appropriately sized, and naturally designed solutions.

Contact: Kimberly Cranmer ■ 412.429.2324
kcranmer@cecinc.com ■ www.cecinc.com

**Participating exhibitor in the gift card prize drawing*

Exhibitor Guide

CJ Geo Contractors

Booth 56

A specialty grouting and lightweight fill contractor based in Richmond, Virginia. We perform polyurethane and cellular grouting from Maine to Miami to Texas solving unique challenges in the vertical, utility, and heavy civil markets.

Contact: James Corbin ■ 804.298.4732
james@cjgeo.com ■ www.cjgeo.com

Contech Engineered Solutions

Booth 95

Provides site solutions for engineers, contractors, architects, and owners. Our portfolio includes bridges, drainage, erosion control, retaining wall, sanitary sewer, and stormwater management products. Through cost-effective engineered solutions, we help build, support, and sustain land development projects while protecting the environment.

Contact: Dan Columbus ■ 470.576.2998
dan.columbus@conteches.com ■ www.conteches.com

Cosmos Technologies Inc.

Booth 41

A certified MBE engineering firm founded in 1998; located in Pittsburgh, Harrisburg, Cleveland, Akron, and Louisville. A team of professional engineers, certified inspectors, and support staff offer technical expertise in civil-site design and development, construction management/inspection, water resources engineering, wastewater engineering, and environmental engineering/safety management.

Contact: Holly Douglas ■ 412.321.3951 ext. 405
hdouglas@cosmostechnologiesinc.com ■ www.cosmostechnologiesinc.com

CUES Inc.

Booth 71

As the world's leading manufacturer of water, wastewater, and stormwater inspection equipment, CUES provides the necessary tools for both pipeline inspection and repair. For 50+ years, CUES has manufactured the most rugged and reliable sewer inspection cameras and equipment in the industry.

Contact: Terri Mooney ■ 407.948.2437
terrim@cuesinc.com ■ www.cuesinc.com

D.E. Gemmill Inc.*

Booth 82

Provides safety apparel and equipment, signs and traffic control products.

Contact: Colleen Gemmill ■ 717.577.8033
colleen@degemmill.com ■ www.degemmill.com

Delve Underground*

Booth 52

A leader in heavy civil engineering, serving the transportation, water, wastewater, and energy industries. Specializing in tunnel design, we provide innovative solutions to the most challenging underground problems. Founded in 1954, as Jacobs Associates, Delve Underground has 25 offices and 350 team members throughout the United States, Canada, Australia, and New Zealand.

Contact: April Brouwer ■ 412.218.0329
brouwer@delveunderground.com ■ www.delveunderground.com

DL VEWS

Booth 21 & 22

Focuses on infrastructure maintenance and rehab projects with two main "branches." Services a range of customers and their culvert and sanitary piping issues. From working with the engineers and owners to in-field/onsite assistance for contractors with culvert slipline and rehab projects, we provide the best answers for failing pipe. Also offers inflow and infiltration stopping for manholes and piping.

Contact: Dan Strickler ■ 717.377.7578
strick@dlviews.com ■ www.dlviews.com

DLZ*

Booth 72

Family-minority owned professional services firm that provides complete engineering, architectural, and construction services to public and private entities with a multidisciplinary staff of more than 900 people in 30 offices in the U.S., including in Bridgeville. Meets the needs of small- and large-scale projects nationwide. Consistently ranked as one of ENR's prestigious "Top 150 Design Firms" in the U.S.

Contact: Jamie North ■ 412.319.4055
jnorth@dlz.com ■ www.dlz.com

**Participating exhibitor in the gift card prize drawing*



PAVEDRAIN SETS THE PERFORMANCE STANDARD FOR STORM WATER MANAGEMENT SYSTEMS

Unit Size and Weight

- ▶ Does not require joint aggregate for stability
- ▶ Open Joints provide reliable infiltration at higher rates

Arch Design

- ▶ Affords additional storage to prevent runoff at critical times

Lowest Cost of Ownership

- ▶ Open Joints require less maintenance
- ▶ Vacuum Truck clears and restores Open Joints in one pass
- ▶ Performance validates investment

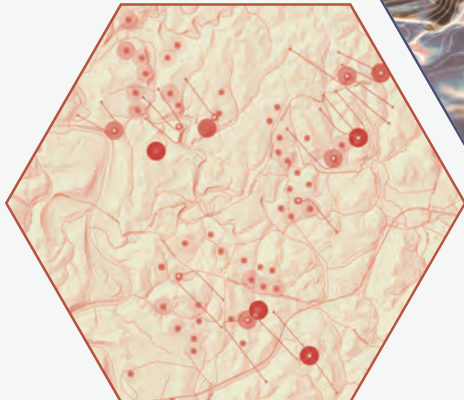
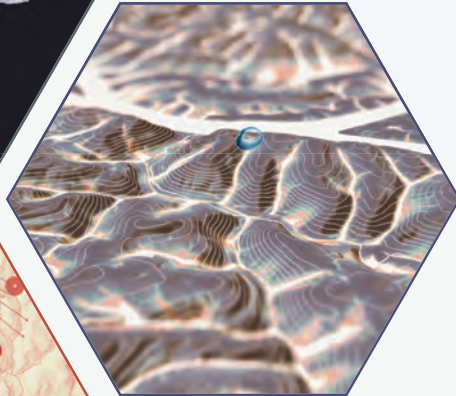
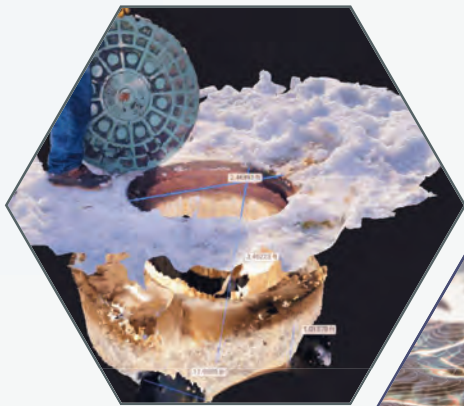


kevconinc.com

Schedule a PaveDrain presentation or Lunch & Learn Today
anneduggan@kevconinc.com | Please see us at Booth #14 3RWW

CIVIC MAPPER GEOSPATIAL SOLUTIONS

For a Changing World



Geospatial Data

GIS Analysis / Modeling

3D Hydrology

Remote Sensing / UAS

Web App Development

CIVICMAPPER.COM

412 545 3627

Exhibitor Guide

DN Tanks

Booth 59

Provides design and construction of prestressed concrete tanks for water, wastewater, and thermal energy storage.

Contact: Corey Meyers ■ 717.356.0491
corey.meyers@dntanks.com ■ www.dntanks.com

Drnach Environmental Inc.*

Booth 2

Founded 26 years ago to provide quality flow monitoring in southwestern Pennsylvania. Has developed extensive and thorough quality assurance and reporting programs, which include both field and office evaluation of real-time and historical flow data, along with hydraulic profiles of specific monitoring points.

Contact: Eric Planey ■ 412.384.5400
eric@drnachenvironmental.com ■ www.drnachenvironmental.com

DRV Inc.*

Booth 49

Provides pump and blower control variable frequency drives and controls VFD, PLC, and HMI maintenance and service.

Contact: Scott Hinsch ■ 412.260.1146
dshinsch@drv-inc.com ■ www.drv-inc.com

Duke's*

Booth 37

Performs sanitary sewer line root control services, I&I studies, smoke & dye testing, CCTV, cleaning and large diameter cleaning along with other services. Was established in 1949 in Syracuse, NY. Corporate office is now located in Elgin, IL with offices across the nation to service the lower 48 states.

Contact: Bob Hunn ■ 614.354.3927
bob@dukes.com ■ www.dukes.com

Dutchland LLC

Booth 81

A manufacturing and construction company that specializes in engineering, manufacturing, and constructing prestressed, post-tensioned concrete tanks for the water and wastewater industries.

Contact: Isaiah Lasche ■ 717.471.8405
ilasche@dutchlandinc.com ■ www.dutchlandinc.com

Edge AI Solutions Inc.

Booth 10

Brings domain expertise in pipe inspection, as well as cross-functional technical expertise in AI/ML, field operations, data analytics, software engineering and robotics. Technology developed for the wastewater industry by the wastewater industry.

Contact: Brandon Ingram ■ 412.607.1740
bingram@edgeaisolutions.com ■ www.edgeaisolutions.com

Eisler Landscapes Inc.

Booth 25

A landscape architectural design and landscape construction firm that is proud to be at the forefront of designing and implementing green infrastructures including green roofs, bio swales, permeable paving, rain gardens, wetlands, SYNlawn recycled synthetic turf, and E&S controls.

Contact: G. Eric French ■ 724.865.2830
eric@eislerlandscapes.com ■ www.eislerlandscapes.com

EJ*

Booth 9

A leader in the design, manufacture, and distribution of access solutions for water, sewer, drainage, telecommunications, and utility networks worldwide. Products include manhole frames and covers, hinged access assemblies, drainage grates, valve boxes, and related products. Made in the USA.

Contact: Kevin Pushay ■ 412.795.6000
kevin.pushay@ejco.com ■ www.ejco.com

E-Tank

Booth 69

Dedicated to quality, performance and reliability, E-Tank rigorously maintains its fleet of tanks, boxes, pumps, and filters. We don't just rent pumps, filtration, tanks, and boxes. We offer service, advice, and information, and we pay close attention to your specific requirements. Our team of knowledgeable and qualified specialists design a system that perfectly addresses your needs.

Contact: Chassidy Omogrosso ■ 412.715.3372
comogrosso@etank.net ■ www.etank.net

**Participating exhibitor in the gift card prize drawing*

Exhibitor Guide

Eurofins Environment Testing Booth 84

Operates out of 44 laboratories and 35 service centers across the U.S. Services include testing of the following matrices of compound/elemental/wet chemistry suites: air, potable water, dioxins/furans, PCB congeners, SVOC, VOC, hydrocarbons, groundwater/surface/non-potable water, metals, PFAS, radiochemistry, sediment/tissue, soil/hazardous waste, nutrients, and oil/fuel/grease.

Contact: Allyson Kirby ■ 412-651-0047
allyson.kirby@et.eurofinsus.com ■
www.eurofinsus.com/env

Exeter Supply Co. Inc. Booth 73

A family-owned municipal water, sewer, and stormwater material supplier. We currently have seven locations in Pennsylvania, and service Pennsylvania, New Jersey, Delaware, and Maryland. We pride ourselves in searching out and bringing new products to our customers in the industry.

Contact: Rob Schulenberg ■ 724.470.6817
robs@exetersupply.com ■ www.exetersupply.com

Ferguson Waterworks Booth 26

A leader in GSI and LID. Offers urban green waterworks solutions – space efficient storage, filters, screens, biofiltration and media, urban landscape, and permeable surfaces – all utilized to overcome urban stormwater challenges in private site and municipal projects. Beyond the products, Ferguson offers comprehensive design and jobsite assistance.

Contact: John Hilbert ■ 610.656.5640
john.hilbert@ferguson.com ■ www.fergusongss.com

FieldForce Booth 55

Provides equipment rentals and services for the municipal, construction, manufacturing, and industrial sectors. Carries Atlas Copco pumps, compressors, and generators available to rent or purchase. FieldForce can deploy rental equipment for bypass, dewatering, and other temporary pumping services throughout the northeast United States.

Contact: Bo Jack ■ 724.350.3870
wjjack@keystoneclear.net ■
www.fieldforcerentals.com

GA Industries a VAG Group Brand* Booth 39

Founded in Pittsburgh in 1895 by Edward Golden & Charles Anderson to manufacture valves for the boiler works industry. Now services the water and wastewater industries along with the stormwater industries with products, such as plug valves, AWWA butterfly valves, pump control and level control valves, check valves, and air valves.

Contact: Greg Clifford ■ 724.900.0241
g.clifford@vag-group.com ■ www.gaindustries.com

GAI Consultants Inc.* Booth 38

Transforming ideas into reality for more than 66 years. GAI is 950+ person, multidiscipline engineering and environmental consulting firm serving clients worldwide in the energy, transportation, real estate, water, municipal, government, and industrial markets from U.S. offices throughout the northeast, midwest, and southeast.

Contact: David Troianos ■ 412.399.5374
d.troianos@gaiconsultants.com ■
www.gaiconsultants.com

GapVax Inc. Booth H

A leading manufacturer of custom-built industrial and municipal vacuum equipment. Combination jetvac, jetters, jetter trailers, air movers, hydrovac, and recycle jetvac.

Contact: Eric Corella ■ 888.442.7829
ecorella@gapvax.com ■ www.gapvax.com

GeoTree Solutions* Booth 87

Provides GeoSpray and GeoSpray HCE geopolymer mortar solutions for large-diameter pipe, manhole, and structure rehabilitation. The geopolymer is sprayed on to create a corrosion-resistant structurally independent pipe inside the old pipe or manhole/structure.

Contact: Scott Naiva ■ 610.971.0362
snaiva@cs-nri.com ■
www.cs-nri.com/brands/geotree-solutions

**Participating exhibitor in the gift card prize drawing*

Exhibitor Guide

GHD*

Booth 27

A professional services company in the global markets of water, energy and resources, environment, property and buildings, and transportation. We deliver engineering, environmental, advisory, digital, and construction services to public and private sector clients across five continents and the Pacific region.

Contact: Mallory Griffin ■ 484.201.5907
mallory.griffin@ghd.com ■ www.ghd.com

Giangarlo Scientific*

Booth 64

Exhibiting Toshiba mount anywhere MAG flowmeters, sludge density control, ultrasonic flowmeters, control systems and drives, corrosion-resistant ventilation fans, laboratory equipment, chemical test kits, Draeger gas detection, aeration flow meters, parshall flumes, portable water samplers, lab instrumentation, rental equipment, onsite calibration of gas detection, fixed and portable gas analyzers, digester gas control equipment, vent valves, sediment traps, and manhole inserts.

Contact: Vince Giangarlo ■ 412.922.8850
vgiangarlo@giangarloscientific.com ■ www.giangarloscientific.com

Golden Equipment Co. Inc.

Booth D

Sales, service, and parts for municipal equipment, including street sweepers, sewer flushers and sanitary TV inspection. Refurbished/pre-owned equipment/rental and contracting are also available.

Contact: Jim Totin ■ 800.242.1494
golden4pa@hotmail.com ■ www.goldenequipmentcompany.com

GPD Group*

Booths 60 & 61

Specializes in architectural and engineering design, construction, telecommunications, and environmental services. Market sectors: public buildings, education, housing, healthcare, parks and recreation, water resources, public works, geotechnical, land surveying, federal, environmental, transportation, retail/commercial, site development and utility services. Committed to developing business within the framework of specialized market sectors.

Contact: Ed Reese ■ 412.586.1397
ereese@gpdgroup.com ■ www.gpdgroup.com

Guyer Brothers Inc.

Booth 8

Offers Thermoform, PVC fold & form pipeline.

Contact: Brad Bowser ■ 814.494.2719
brad@guyerbros.com ■ www.guyerbros.com

Herbert, Rowland & Grubic Inc. (HRG)

Booth 5

Originally founded in 1962, HRG is an employee-owned, full-service civil engineering and related services firm that provides quality, cost-effective design solutions to public and private sector clients. We offer a full complement of technical expertise and engineering services including municipal, water and wastewater, land development, transportation, water resources, geographic information systems (GIS), survey, environmental, construction phase, and financial services.

Contact: Kara Smith ■ 304.669.6399
ksmith@hrg-inc.com ■ www.hrg-inc.com

Honor Engineer Co.

Booth 97

A multi-disciplinary engineering firm located in Harrisburg with branch offices in Pittsburgh and Douglassville, PA that offers a comprehensive range of services including geospatial, construction, landscape architecture, civil, water, environmental, geotechnical, and structural engineering. Incorporated in 2002, Honor primarily serves the Mid-Atlantic and Northeast Regions, with the ability to perform nationwide. As a Service-Disabled Veteran Owned Small Business, we understand what it means to serve.

Contact: Alma Rettinger ■ 717.533.9077
arettinger@honorengineer.com ■ www.honorengineer.com

InfoSense Inc.

Booth 58

The manufacturer of the Sewer Line Rapid Assessment Tool, or SL-RAT®, an award-winning acoustic inspection technology used to screen for blockages in small-diameter gravity sewers. The SL-RAT allows you to focus your collection system resources on areas with identified need.

Contact: Chris Callahan ■ 877.747.3245
ccallahan@infosense.com ■ www.infosense.com

**Participating exhibitor in the gift card prize drawing*



THE MEASURE OF QUALITY

mbe

monaloh basin engineers

www.mbe-eng.com

Exhibitor Guide

Insight Pipe Contracting LLC/ IPC Services LLC Booth 54

A full-service provider of underground utility and maintenance and trenchless rehabilitation solutions. Offers CCTV inspections, sewer cleaning, spot-repair lining, and end-to-end lining. A hometown contractor with services that provide clients with innovative solutions to protect and improve the environment and our communities.

Contact: Bob Carpenter ■ 412.292.4423
bob.carpenter@insightpipe.com ■
www.insightpipe.com

Insituform-Underground Solutions Booth 45

Insituform provides (CIPP) for both water and sewer applications, available for 6" to 100" diameter pipe. Underground Solutions sells Fusible PVC® pipe for both water and sewer applications, available in sizes from 4" to 36" diameter pipe. We also sell Terrabrute®, which is a fully restrained bell & spigot PVC pressure pipe.

Contact: Sue Bazen ■ 616.856.2871
sbazen@azuria.com ■ www.azuria.com

Johnson, Mirmiran & Thompson Inc. (JMT) Booth 86

A 100%-employee-owned firm, specializing in the built and natural environments with six offices in Pennsylvania and more than three dozen additional offices across the U.S. This year JMT celebrates 53 years of providing services that turn visions into realities with gratitude for our clients, communities, and employees.

Contact: Nick Modany ■ 412.375.5123
nmodany@jmt.com ■ www.jmt.com

Kappe Associates Inc. Booth 17

Provides quality products and expert service for the wastewater and water treatment equipment industry. Works with engineering firms, authorities, and governmental bodies to provide initial designs, specifications, and other information with consideration given to meeting environmental regulations, capital costs, and operational costs. Provides process equipment for a complete wastewater facility from headworks to the discharge.

Contact: Brian Fenstemaker ■ 412.373.9303
brian@kappe-inc.com ■ www.kappe-inc.com

KEVCON Inc.* Booth 14

Celebrating 30+ years of Shaping Project Performance with the Keystone Retaining Wall System and PaveDrain the performing permeable block that sets the Performance Standard for storm water management. The size and shape of the PaveDrain unit does not require joint aggregate for stability. The Open Joints have the highest infiltration rates and simplest maintenance for any permeable drive surface.

Contact: Anne Duggan ■ 412.445.4509
anneduggan@kevconinc.com ■ www.kevconinc.com

KLH Engineers Inc. Booth 63

For over 40 years, KLH Engineers, Inc. has provided full-service environmental and municipal engineering services to more than 600 clients, over 100 of which we are serving today. Our experience is varied and comprehensive, and encompasses planning, surveying, design, permitting, and construction administration of water, wastewater, municipal, and industrial facilities.

Contact: Samuel Gibson ■ 717.538.1893
sgibson@klhengineers.com ■ www.klhengineers.com

LB Water Booths 34 & 35

A value-added distributor of waterworks infrastructure products for potable, sewer, stormwater, and environmental projects.

Contact: Ben Reichley ■ 570.238.4669
ben.reichley@lbh2o.com ■ www.lbh2o.com

LSSE* Booth 31

A leading provider of civil engineering and surveying services for nearly 40 years. Serves public & private clients in the municipal, commercial, industrial, institutional, residential, and utilities markets. Specializes in wastewater facilities, water facilities, and stormwater/green infrastructure planning, design and construction phase services. LSSE's operating plan focuses on client satisfaction and corporate and individual career development.

Contact: Jason Stanton ■ 412.264.4400
jstanton@lsse.com ■ www.lsse.com

**Participating exhibitor in the gift card prize drawing*

Exhibitor Guide

McCormick Taylor

Booth 89

A full-service consultant engineering firm since 1946, specializing in engineering for transportation and planning, highway, structural, traffic, and municipal projects, as well as planning, energy/utility permitting, water resources, environmental studies, and compliance and communications services. Headquartered in Philadelphia and has nearly 400 employees throughout 16 offices across the eastern U.S.

Contact: Kenneth Rich ■ 724.422.8703

kvrich@mccormicktaylor.com ■

www.mccormicktaylor.com

Michael Baker International Inc.

Booth 6

Based in Pittsburgh, a leading provider of engineering and consulting services, including design, planning, architectural, environmental, construction, and program management. Has been solving some of the world's most complex infrastructure challenges for more than 80 years with a legacy of expertise, experience, innovation, and integrity.

Contact: Jonathan Shimko ■ 412.269.6300

jonathan.shimko@mbakerintl.com ■

www.mbakerial.com

Morris Knowles and Associates Inc.*

Booth 16

A civil engineering and surveying firm in Monroeville, PA, established in 1916. With three office locations, MKA provides services in energy support for Utica and Marcellus Shale, pipelines, wetlands services, landscape architecture, drone UAV, surveying, transportation and bridge, structural, civil site, and environmental and municipal engineering.

Contact: Bill Utzman ■ 724.468.4622

wputzman@morrisknowles.com ■

www.morrisknowles.com

Mott MacDonald

Booth 80

A \$2 billion global management, engineering, and development firm. An employee-owned company with 16,000 employees and over 180 offices delivering sustainable outcomes for clients in 150 countries worldwide. Mott MacDonald works on projects in the buildings, digital, energy, environment, transportation, and water and wastewater sectors.

Contact: Kemal Niksic ■ 412.497.2944

kemal.niksic@mottmac.com ■ www.mottmac.com

ms consultants inc.

Booth 44

A multidiscipline engineering, architecture, and planning firm for the transportation, environmental, architecture, commercial, municipal, and construction industries.

Founded in 1963, the award-winning firm has nearly 400 employees among nine offices in Indiana, North Carolina, Ohio, Pennsylvania, and West Virginia.

Contact: Kari Mackenbach ■ 614.898.7100

kmackenbach@msconsultants.com ■

www.msconsultants.com

MTech

Booth 78

For nearly 50 years, MTech has been the cornerstone of the sewer, street, and safety industries. Our seasoned experts are available 24/7 to provide the best possible service.

Whether you need sales, service, training, or parts, we are committed to being the complete solution for all your needs. Trust us to help you achieve your goals and elevate your work to new heights.

Contact: Ryan Skelton ■ 412.952.3645

rskelton@mtechcompany.com ■

www.mtechcompany.com

National Gunite*

Booth 53

Provides trenchless repair of sewers and storm culverts using concrete that is sprayed onto steel reinforcement. Deteriorating lines are repaired from the inside, restoring structural integrity of the pipe for decades of future use.

Contact: Shane Snyder ■ 570.447.9977

shane@nationalgunite.com ■

www.nationalgunite.com

Neal Systems*

Booth 48

Fully integrated with strong instrumentation expertise. NSI has unparalleled process, electrical, instrumentation, controls, and automation capabilities. We have a strong history of supporting state, city, and local municipalities, large and small. We provide on-site training specific for the needs of our customers.

Contact: Justin Bendik ■ 215.968.7577

jbendik@nealsystems.com ■ www.nealsystems.com

**Participating exhibitor in the gift card prize drawing*

Exhibitor Guide

Nicholson Construction Company Booth 51

Has been both a leader and an innovator in the geotechnical construction industry for more than 60 years. With regional offices across the country and headquarters in Pittsburgh, Nicholson is a nationally renowned specialty contractor offering proven expertise in the design and installation of deep foundation elements, earth retention systems, and ground treatment solutions.

Contact: Gretchen Connelly ■ 412.221.4500
gretchen.connelly@nicholsonconstruction.com ■
www.nicholsonconstruction.com

Omega Liner Company* Booth 47

Manufactures high-strength, environmentally friendly, UV-cured CIPP liners for trenchless rehabilitation and repair of wastewater and stormwater piping systems. Providing premium quality UV-cured CIPP products, installation, training, and equipment to contractors with the highest performing materials available for support of municipal agencies.

Contact: Mark McClymonds ■ 724.996.1409
m.mcclymonds@omegauvpipe.com ■
www.omegauvpipe.com

PA One Call Booth 74

Our purpose is to prevent damage to underground facilities. To promote safety, we provide an efficient and effective communications network among project owners, designers, excavators, and facility owners.

Contact: Dan Nemanic ■ 412.509.7232
djnemanic@pa1call.org ■ www.pa1call.org

Penn E&R Inc.* Booth 83

Penn Environment & Remediation (Penn E&R) is a full-service environmental, engineering and construction consulting company headquartered in Doylestown with offices in Pittsburgh and Mansfield, PA. We provide expert consultation and turnkey service to deliver reliable, cost-effective solutions to municipalities, industries, markets, and valued private clients. Our experience and dedication ensure our clients' expectations are always met or exceeded.

Contact: Bob Roach ■ 412.722.1222
rroach@penn-er.com ■ www.penn-er.com

Performance Pipelining Inc. Booth 15

Incorporated in 1991, PPI was the first LMK Licensee to install a steam-cured Lateral Liner in 2003. As a Disabled Veteran Owned, Small Business, PPI performs: no dig connections & sewer lateral rehabilitation, dig & replace sewer laterals, main & lateral rehabilitation via CIPP lining, vacuum excavated clean out installation, inspection & CCTV reports, high pressure root & debris removal, large diameter man entry connection repairs, manhole frame and cover replacement/resets.

Contact: Garrett Washington ■ 814.803.8712
gwashingtonppi@gmail.com ■ www.ppi-liner.com

Pittsburgh Water & Sewer Authority Booth 70

The largest combined water, sewer, and stormwater authority in Pennsylvania, serving 300,000 consumers throughout the City of Pittsburgh and surrounding areas.

Contact: Holly Bomba ■ 412.260.0840
hbomba@pgh2o.com ■ www.pgh2o.com

Precision Laser & Instrument Inc. Booth 62

A Trimble Authorized Distribution Partner that provides comprehensive positioning solutions for construction, surveying, and GIS/mapping and forensics industries through sales, service, repair, rentals, training, and technical support of top-quality laser, optical, positioning equipment, field supplies, and accessories.

Contact: Christine Iksic ■ 412.512.5665
pli@laserinst.com ■ www.laserinst.com

PumpMan Pittsburgh Booths A & B

A manufacturer's representative and repair/service provider for municipal, industrial, and commercial water and wastewater treatment equipment/systems. PumpMan represents numerous pump, valve, and pump system manufacturers, and serves the Western Pennsylvania, West Virginia, Eastern Ohio, and Maryland Panhandle markets. The company's services include: new equipment sales; start-up; routine inspection; field troubleshooting; and repair.

Contact: Dan Nelson ■ 412.487.7140
ap@pumpmanpittsburgh.com ■
www.pumpman.com/pittsburgh

**Participating exhibitor in the gift card prize drawing*

KLH

ENGINEERS, INC

Since 1982



www.klhengineers.com

info@klhengineers.com



Pittsburgh

5173 Campbells Run Road
Pittsburgh, PA 15205
412.494.0510

West Mifflin

1020 Lebanon Road
West Mifflin, PA 15122
412.494.0510

Canonsburg

130 Cecil Street
Canonsburg, PA 15317
724.916.0061

Large enough to solve big problems. Small enough to care.

Exhibitor Guide

Rain for Rent

Booth 32

A leading provider of temporary liquid handling solutions including pumps, tanks, filtration, and spill containment. Projects range from flood relief to construction site dewatering, sewer bypasses, and industrial plant turnarounds. The company is known for its systems engineering expertise and its ability to tackle complex jobs cost effectively, providing an exceptionally high value.

Contact: Scott Legg ■ 412.504.9787
slegg@rainforrent.com ■ www.rainforrent.com

Ravan AIR

Booth 85

A company located in Crawford County that is a full service CCTV, laser profile, MSI contractor. Ravan AIR prides itself on being on the leading edge of technology to set itself apart from its competition.

Contact: Mark Sakach ■ 814.853.5127
mark@ravanair.com ■ www.ravanair.com

RedZone Robotics Inc.

Booth 7

Provides wastewater asset management solutions using clear and concise data to guide asset managers in critical infrastructure decisions. We understand the cost of infrastructure failures and shepherd leaders in the processes that protect their communities with the most efficient and economical solutions.

Contact: Sam Cancilla ■ 412.476.8980
scancilla@redzone.com ■ www.redzone.com

Robinson Pipe Cleaning

Booth 1

Offers full-length digital CCTV, sonar, laser profiling, sewer cleaning, main line grouting, lateral grouting, manhole rehabilitation, sectional point repairs, CIPP lining of laterals from the main, and lateral connection lining.

Contact: Mike Long ■ 412.921.2100
long@robinsonpipe.com ■ www.robinsonpipe.com

The RootX® Company*

Booth 29

For over 30 years The RootX® Company has been your direct source for solving Fats, Roots, Oils & Grease (F.R.O.G.) issues using the RootX® and Grease-X product lines. The simplicity of application allows municipal sewer crews and contractors to effectively eliminate SSOs caused by F.R.O.G.

Contact: Drew Raffensperger ■ 503.315.0751
drew@rootx.com ■ www.rootx.com

SAERTEX multiCom

Booth 33

Industry-leading manufacturer of UV-cured fiberglass-reinforced pipe liner in the world. A solution provider for the trenchless rehabilitation of wastewater and supply pipes, we partner with our customers throughout the installation process from initial planning and bidding to on-site support and project completion. As a result, our high-performance liners have been successfully installed on thousands of projects.

Contact: Troy Cubero ■ 414.499.6545
t.cubero@saertex.com ■ www.saertex-multicom.com

Sauereisen Inc.*

Booth 19

A 125-year-old Pittsburgh-based company and a world leading manufacturer of corrosion-resistant materials of construction. We manufacture sealants, corrosion barriers and substrate repair materials for the protection and restoration of wastewater infrastructure. From collection systems to treatment facilities, Sauereisen offers materials to resist acidic environments and prevent water inflow & infiltration.

Contact: Mackenzie Paesano ■ 412.963.0303
mlpaesano@sauereisen.com ■ www.sauereisen.com

Sci-Tek Consultants Inc.*

Booth 18

Founded in 1996. A certified-MBE organization providing sustainable solutions for clients in various industries, including water and wastewater. Our services include site civil design, design of green stormwater infrastructure, water resources engineering and planning, geotechnical engineering, GIS and asset management, surveying and mapping, and environmental consulting.

Contact: Maria Atkinson ■ 412.371.4460
matkinson@scitekanswers.com ■ www.scitekanswers.com

**Participating exhibitor in the gift card prize drawing*

Exhibitor Guide

Sherwin-Williams*

Booth 75

There are many coatings manufacturers, but there is only one Sherwin-Williams Protective & Marine. Deploying a team of highly experienced and skilled functional experts working closely together to help our customers achieve success is the hallmark of our knowledge and product delivery.

Contact: Toby Butler ■ 717.753.0653

toby.butler@sherwin.com ■

<https://industrial.sherwin-williams.com/na/us/en/protective-marine.html>

S.M. Sawchuk Sales Inc.

Booth 11

S.M. Sawchuk Sales is excited to be part of the 25th Anniversary of the 3 Rivers Wet Weather Sewer Conference. Sawchuk Sales has been a leader in the wastewater/water industry for over 29 years specializing in overflow, inflow and infiltration, data delivery services, stream monitoring, and industrial applications. As a representative for HACH Flow/McCrometer, we serve the territories of Western PA, Western MD, and the state of WV. Sawchuk continues to be a leader in providing the newest technology and instrumentation with excellent customer service.

Contact: Steven Sawchuk ■ 412.443.5167

sawchuk22@aol.com ■ www.smsawchuksales.com

Society of Women Environmental Professionals (SWEP) **Booth 30**

Our mission is to provide women environmental professionals, working within the Three Rivers region, a community that recognizes and supports women's leadership and career development, and provides a forum to share information and ideas and promote public service within the environmental field.

Contact: Gabrielle Stevens ■ 412.334.3237

gabrielle.stevens@hdrinc.com ■ www.swep3rivers.org

Stantec

Booth 68

Is a global leader in sustainable engineering, architecture, and environmental consulting. The diverse perspectives of our partners and interested parties drive us to think beyond what's previously been done on critical issues like climate change, digital transformation, and future-proofing our cities and infrastructure. We innovate at the intersection of community, creativity, and client relationships to advance communities everywhere.

Contact: Vito Cimino ■ 216.298.0621

vito.cimino@stantec.com ■ www.stantec.com

State Pipe Services Inc.

Booth 90

Full-service municipal sewer & storm infrastructure inspections, cleaning, and rehabilitations, NASSCO-certified CCTV inspectors, jet and vactor truck cleaning, debris disposal, HDPE pipe bursting and slip lining, CIPP point repairs, pressure grouting, and manhole rehabilitations.

Contact: Tim Kenney ■ 724.679.0104

tkenney@statepipeservices.com ■

www.statepipeservices.com

Stephenson Equipment, Inc.

Booth I

Since 1957 Stephenson Equipment has provided public works and infrastructure equipment, cranes & lifting solutions, asphalt paving, road maintenance, and construction equipment, rentals, parts, and service to PA, NY, and surrounding areas. Our public works & infrastructure division offers Vac Con combination trucks, jettors, and hydro-excavating machines; municipal truck packages, dump trucks and custom truck up-fits from J&J Truck Bodies, Super City Manufacturing, and Henderson. We also offer Stewart Amos street sweepers, Insight Vision cameras, and Enz Nozzles, and asphalt repair equipment.

Contact: Treven Kraus ■ 724.496.8457

tkraus@stephensorequipment.com ■

www.stephensorequipment.com

**Participating exhibitor in the gift card prize drawing*



ejco.com
Made in the USA

Manhole Frames ■ Manhole Covers ■
Hinged Access Assemblies ■ Drainage Grates ■
Valve Boxes ■ Related Products

Visit Booth #9

Contact: Kevin Pushay
412.795.6000
kevin.pushay@ejco.com
www.ejco.com

Saw Mill Run Streambank Stabilization Pittsburgh, PA



Expect a straightforward approach

We make it easy.

Design | CM/CI | Program Management | Technology

Our staff helps the citizens and agencies of the Pittsburgh region to resolve their wet weather issues. We are your local, award-winning partner.

Follow us on [in](#)



jmt.com

SHERWIN-WILLIAMS®

Protective & Marine Coatings

Water & Wastewater Industry

We deliver optimal solutions to combat corrosion and extend the service lives of critical assets – with fast return-to-service times to minimize downtime.

You may need easy-to-use formulations that enable high-film builds in a single pass, reducing the number of coats required to protect assets. Or are looking for cementitious resurfacing, epoxy and polyurethane technologies that extend the lives of concrete manholes, wet wells, clarifiers and more.

From our exterior steel coatings to tank linings, you'll find a high-performance solution to maintain long service lives and aesthetics.

Visit Booth #75

Contact: Toby Butler
717.753.0653
toby.butler@sherwin.com

<https://industrial.sherwin-williams.com/na/us/en/protective-marine.html>

Exhibitor Guide

StormTank

Booth 28

Products include: Module, Shield, Pack and URS. Offers an affordable and sustainable solution for storm water management. These products have been designed to address customers' unique project applications from large-scale detention and infiltration to rainwater harvesting and urban root systems.

Contact: James Freed ■ 713.545.4941
james.freed@brentwoodindustries.com ■
www.stormtank.com

StormTrap

Booth 42

Offers solutions for managing runoff, protecting waterways, and improving the use of property. Committed to providing cost-effective, customized water management solutions to engineers, owners, and municipalities across North America and abroad. Whether you're concerned about water quality, detention, infiltration or water harvesting, StormTrap has a design to reduce our footprint, accommodate site constraints, lower overall costs, and meet specific project needs.

Contact: Paige Beichner ■ 878.600.1451
pbeichner@stormtrap.com ■ www.stormtrap.com

t4 Spatial

Booth 77

t4 Vault is a robust cloud solution that automatically organizes, stores, and presents any sewer inspection data in a shareable format. Users simply drag and drop video files "as-is" from the job site or office into t4 Vault and it does the rest, making the data instantly accessible within our dashboard or tied to asset management programs and/or GIS.

Contact: Michael Thompson ■ 412.818.3829
mthompson@t4spatial.com ■ www.t4spatial.com

U.S. Municipal

Booth G

A dealer for several environmental products like Vac-Con Combination Sewer Units, Ibak Pipeline Inspection Equipment, PipeHunter Jetters and Enz Nozzles. Nine salespeople cover all of Pennsylvania for these products and provide service after the sale.

Contact: Bob Griffiths ■ 412.335.9303
rsg@usmuni.com ■ www.usmuni.com

Utility Services Group Inc.

Booth 46

A premier Storm water, MS-4 and sanitary sewer contractor in the Mid-Atlantic region providing: CCTV, inspection, cleaning, vacuuming, I&I investigation, manhole/pipe rehabilitation, mapping and SUE support, hydro-excavation, sinkhole remediation, foundation/slab jacking, problem solving and repair solutions to new and existing facilities.

Contact: Anne Shambaugh ■ 717.599.6180
ashambaugh@usginc.net ■ www.usgnc.net

Verdantas

Booth 91

In 2020, we started with a vision to build a consulting company focused on our environment and making the world a better place. Gather like-minded companies sharing this vision, we made a strategic choice to prioritize people. Every new member brings unique engineering, planning, scientific, and technical skills, fortifying our collective ability to tackle complex challenges as one unified, powerful entity.

Contact: Shawn Aiken ■ 440.530.2282
saiken@ctconsultants.com ■ www.verdantas.com

Waterline Renewal Technologies

Booth 79

Waterline Renewal is at the cutting edge of trenchless technology, specializing in advanced solutions for sewer and pipeline rehabilitation. WRT's innovative approach combines state-of-the-art technology with decades of industry expertise to offer efficient, non-invasive repair methods. By focusing on minimizing disruption and extending the lifespan of vital infrastructure, WRT delivers superior performance and cost-effectiveness for municipal and commercial applications.

Contact: Jacob Patten ■ 402-432.0974
jpatten@waterlinerenewal.com ■
www.waterlinerenewal.com

**Participating exhibitor in the gift card prize drawing*

Exhibitor Guide

Watertap Inc.*

Booth 23

Provides live taps, valve insertions, and line stops with bypass capabilities. Our services are performed while the system remains under pressure and available to the community. This eliminates system disruption and the need to send out boil water alerts. Watertap Inc. has been servicing municipalities for 25 years and has the knowledge and experience to help customers tackle the most complicated issues as they arise.

Contact: Eric Olsen ■ 248.794.7122
eric@watertapinc.com ■ www.watertapinc.com

WB Wells Co. Inc.*

Booth 76

Is the exclusive representative for Draeger fixed LEL & Toxic Gas Detection products and systems in western PA and an authorized distributor of Draeger portable gas detection and respiratory products. WB Wells is the only Draeger Certified Service Partner based in western PA. WB Wells was founded in 1970 and specializes in analytical instrumentation for safety, environment, and process control.

Contact: David Wells ■ 412.221.0390
drwells@wbwellsco.com ■ www.wbwellsco.com

WinCan LLC*

Booth 13

WinCan VX is an innovative data collection and analysis software that has the ability to make critical decisions based on data collected from pipeline inspections. Once collected, this data and video can be shared and delivered effortlessly through a cloud-based service called WinCan Web.

Contact: Tim Mallon ■ 412.335.8271
t.mallon@wincan.com ■ www.wincan.com

WSP USA Inc.*

Booth 88

One of the world's leading engineering, environment and professional services firms. Recognized in 2023 on TIME's list of the world's best companies and Fortune's Change the World list, WSP brings together engineers, planners, technical experts, strategic advisors and construction management professionals who are dedicated to collaborate in the best interests of serving local communities. WSP designs lasting solutions in the buildings, transportation, energy, water and environment markets.

Contact: Kelly Lennon ■ 410.746.6734
kelly.lennon@wsp.com ■ www.wsp.com/en-us

Xylem Dewatering Solutions* Booths 66 & 67

Maintains a fleet of 6,000 portable pumps and 3,200 pieces of related equipment for use in construction dewatering, mining, drinking water supply, and water/wastewater bypass. Available in sizes 2 inches to 24 inches. The Dri-Prime Pump features priming to 28-feet, dry running, and solids handling capabilities.

Contact: Linda Bayne ■ 412.613.0070
linda.bayne@xylem.com ■ www.xylem.com

Xypex*

Booth 57

With over 50 years of expertise, Xypex leads in waterproofing and concrete protection. Our Crystalline technology excels in rehabilitated, new sewage, and wastewater structures, offering unmatched resistance to chemical attacks and water infiltration under extreme pressure. For high H₂S conditions, trust our Bio-San (antimicrobial and crystalline) product for superior performance.

Contact: Lucas McCann ■ 609.618.8788
lucas.mccann@xypex.com ■ www.xypex.com

**Participating exhibitor in the gift card prize drawing*

CCTV INSPECTIONS
CIPP INTERNAL REPAIR





STATE PIPE SERVICES, INC.

UTILITY CONTRACTORS

PIPE BURSTING & RESTORATION



724-538-3900
www.StatePipeServices.com

PIPE SLIP LINING & MANHOLE REHAB



SEWER

McCORMICK TAYLOR

McCormick Taylor delivers industry leading consulting, engineering, and environmental design services to enhance, restore, and preserve the natural environment.

Our team is comprised of hydrologic and hydraulic engineers, environmental scientists, and landscape architects who bring a combination of science, engineering, and aesthetic ingenuity to every project. Our priority is to integrate sound engineering principles with unique ecological concepts to deliver rightsized solutions to our clients' challenges and help navigate evolving federal, state, and local regulations.

LOCAL OFFICE IN PITTSBURGH
mccormicktaylor.com



EDGE AI
EDGEAISOLUTIONS.COM



Getting the full picture used
to be a pipe dream.

Now, it's the name of our robot.

Pipe Dream® is the only CCTV inspection robot subscription
that includes maintenance, standard upgrades, and video hosting.

So there are never surprises in your pipes or budget.

Visit TryPipeDream.com

TERMS AND CONDITIONS APPLY. SEE EDGEAISOLUTIONS.COM/AGREEMENT FOR DETAILS.



www.3riverswetweather.org